

vtech®

Parent's Guide



## Gear Up & Go Train



91-003372-001 UK

**VTech understands that a child's needs and abilities change as they grow and with that in mind we develop our toys to teach and entertain at just the right level...**

## **vtech** Baby

**Toys that will stimulate their interest in different textures, sounds and colours**

### **I am...**

...responding to colours, sounds and textures

...understanding cause and effect

...learning to touch, reach, grasp, sit-up, crawl and toddle

*Birth-36 months*



## **Pre-School**

**Interactive toys to develop their imagination and encourage language development**

### **I want...**

...to get ready for school by starting to learn the alphabet and counting

...my learning to be as fun, easy and exciting as can be

...to show my creativity with drawing and music so my whole brain develops

*3-6 years*



## **Electronic Learning Computers**

**Cool, aspirational and inspiring computers for curriculum related learning**

### **I need...**

...challenging activities that can keep pace with my growing mind

...intelligent technology that adapts to my level of learning

...National Curriculum based content to support what I'm learning at school

*4-10 years*



To learn more about this and other VTech® products, visit [www.vtech.co.uk](http://www.vtech.co.uk)

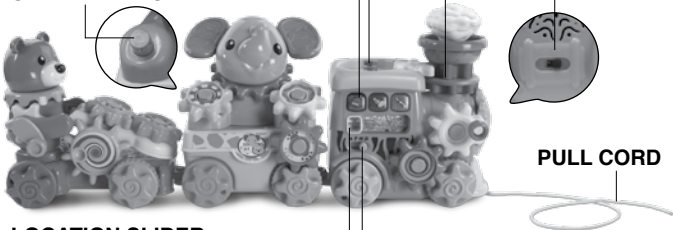
# INTRODUCTION

Thank you for purchasing the **GearZooz® Gear Up & Go Train** by **VTech®**! This adorable train will take your little one on an exciting learning adventure. Let your child create their own unique train by mixing and matching the 15 included gears while strengthening their fine motor skills and problem-solving techniques.

**PURPLE SMART POLE**

**LIGHT UP INSTRUMENT BUTTONS**

**STANDARD POLE**



**TRIGGER GEAR**

**VOLUME CONTROL SWITCH**

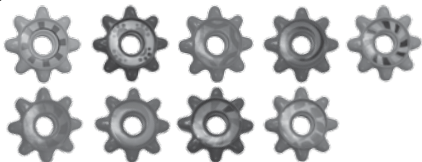
**PULL CORD**

**LOCATION SLIDER**

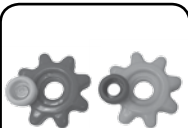
**ON/OFF/ACTIVITY SWITCH**



**4 SMART GEAR ANIMALS**



**9 Standard Gears**



**2 Handle Gears**

# INCLUDED IN THIS PACKAGE

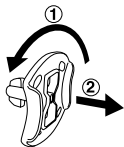
- One VTech® Gear Up & Go Train
- Four smart gear animals
- Nine standard gears
- Two handle gears
- One parent's guide

## WARNING:

All packing materials such as tape, plastic sheets, packaging locks, removable tags, cable ties and packaging screws are not part of this toy, and should be discarded for your child's safety.

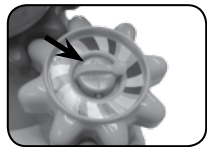
**NOTE:** Please keep this parent's guide as it contains important information.

## Unlock the packaging locks:



- ① Rotate the packaging locks 90 degrees anticlockwise.
- ② Pull out the packaging locks and discard.

## Remove the Cable Ties:



- ① Cut the ties with a pair of scissors.
- ② Remove the ties.

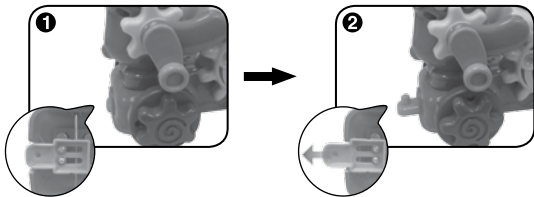
### Unlock the Smart Gear Lion:

1. Slide the white tab to the right to unlock the **Smart Gear Lion**.
2. Lift the tab and take the **Smart Gear Lion** off the train engine.
3. Discard the white tab.



### Pull out the Train Connector

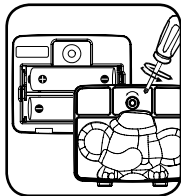
1. Locate the orange train connector underneath the bear's train car.
2. Slide the train connector out until it clicks into place.



## GETTING STARTED

### BATTERY INSTALLATION

1. Make sure the unit is turned **OFF**.
2. Locate the battery cover on the back side of the unit and open it with a screwdriver.
3. Install 2 new AA size (AM-3/LR6) batteries into the battery box as illustrated. (The use of new alkaline batteries is recommended for maximum performance).



4. Replace the battery cover and tighten the screw to secure.

## BATTERY NOTICE

- Use new alkaline batteries or fully charged NI-MH (Nickel Metal-hydride) rechargeable batteries for best performance.
- Use only batteries of the same or equivalent type as recommended.
- Do not mix different types of batteries: alkaline, standard (carbon-zinc) or rechargeable (Ni-Cd, Ni-MH), or new and used batteries.
- Do not use damaged batteries.
- Insert batteries with the correct polarity.
- Do not short-circuit the battery terminals.
- Remove exhausted batteries from the toy.
- Remove batteries during long periods of non-use.
- Do not dispose of batteries in fire.
- Do not charge non-rechargeable batteries.
- Remove rechargeable batteries from the toy before charging (if removable).
- Rechargeable batteries are only to be charged under adult supervision.

## Disposal of batteries and product



The crossed-out wheelee bin symbols on products and batteries, or on their respective packaging, indicates they must not be disposed of in domestic waste as they contain substances that can be damaging to the environment and human health.



The chemical symbols Hg, Cd or Pb, where marked, indicate that the battery contains more than the specified value of mercury (Hg), cadmium (Cd) or lead (Pb) set out in Battery Directive (2006/66/EC).

The solid bar indicates that the product was placed on the market after 13th August, 2005.

Help protect the environment by disposing of your product or batteries responsibly.

For more information, please visit:  
[www.recycle-more.co.uk](http://www.recycle-more.co.uk)  
[www.recyclenow.com](http://www.recyclenow.com)

## PRODUCT FEATURES

### 1. ON/OFF/ACTIVITY SWITCH

Slide the **ON/OFF/ACTIVITY SWITCH** to choose an activity. To turn the unit **OFF**, slide the switch to the **OFF** (●) position.

### 2. LIGHT UP INSTRUMENT BUTTONS

Press the three **LIGHT UP INSTRUMENT BUTTONS** to learn about the instruments, answer questions or create a melody.

### 3. LOCATION SLIDER

Move the **LOCATION SLIDER** to learn about the locations, answer questions or choose a melody.



### 4. PURPLE SMART POLE

Place a **SMART GEAR ANIMAL** on the **PURPLE SMART POLE** to learn about the animal or to add in fun animal sounds to the songs when you pull the train along.



### 5. STANDARD POLES

There are seven **STANDARD POLES**. **STANDARD POLES** do not trigger electronic responses.



## 6. TRIGGER GEAR

Turn the **TRIGGER GEAR** to learn about the train and locations, hear melodies or repeat a question.



## 7. PULL CORD

Pull the train along to hear fun songs and responses. Place a **SMART GEAR ANIMAL** on the **PURPLE SMART POLE** and pull the train along to hear fun animal sounds added to the songs.

## 8. PULL CORD AND STORAGE

To convert the unit from a pull toy to a push toy, remove the **PULL CORD** from the storage compartment on the bottom of the **Gear Up & Go Train**.



For your child's safety we suggest you store the **PULL CORD** in the compartment until your child is walking. We also recommend that you supervise your child when using the **PULL CORD**.

## 9. VOLUME CONTROL SWITCH

The **VOLUME CONTROL SWITCH** is located on the back of the train engine. Slide the switch to select **Low**  or **High**  volume.

## 10. Automatic Shut Off

To preserve battery life, the **Gear Up & Go Train** will shut off automatically after several minutes without any input. The Train can be turned on again by sliding the **ON/OFF/ACTIVITY SWITCH**. The Train will also automatically turn off when the batteries are very low. When this happens we suggest replacing them with a new set of batteries.



# TO BEGIN PLAY

## Activate Normal Play Mode:

The **Gear Up & Go Train** is in **TRY ME** mode in the packaging. To activate normal play mode, turn the unit on. Place any **SMART GEAR ANIMAL** on the **PURPLE SMART POLE**. You will hear the train whistle notifying you that normal play mode has been activated.

**Note:** Be sure to remove the white tab from the **Smart Gear Lion** before playing.

## ACTIVITIES

### 1. Exploration Fun

Move the **LOCATION SLIDER** to learn about locations. Press the **LIGHT UP INSTRUMENT BUTTONS** to learn about instruments. Turn the **TRIGGER GEAR** to learn about the train and locations. Pull the train along to hear songs. If a **SMART GEAR ANIMAL** is on the **PURPLE SMART POLE**, turn the **TRIGGER GEAR** to learn about the animal or pull the train along to add animal sounds into the songs.

### 2. Quiz Mode

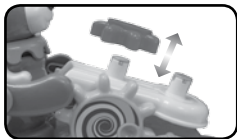
Listen to questions about the instruments or locations. Move the **LOCATION SLIDER** or press the **LIGHT UP INSTRUMENT BUTTONS** to answer the questions. Turn the **TRIGGER GEAR** to repeat the question. Pull the train along to hear songs. Place a **SMART GEAR ANIMAL** on the **PURPLE SMART POLE** to hear the animal name and animal sound. If a **SMART GEAR ANIMAL** is on the **PURPLE SMART POLE**, pull the train along to add animal sounds into the songs.

### 3. Music Fun 🎵

Move the **LOCATION SLIDER** to select a melody. Press the **LIGHT UP INSTRUMENT BUTTONS** to add or remove instruments. The button will light up when the instrument is added into the melody. Press again to remove the instrument and the light will switch off. Turn the **TRIGGER GEAR** to add fun sounds into the melody. If a **SMART GEAR ANIMAL** is on the **PURPLE SMART POLE**, turn the **TRIGGER GEAR** to add animal sounds into the melody. Pull the train along to add animal sounds into the songs.

### 4. Gears

Add and remove the **Gears** to create your own unique train. Then, pull the train along to watch the **Gears** move.



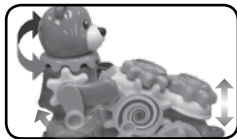
### 5. Mix & Match

Change the order of the train carriages by removing them from the train engine and rearranging them.



### 6. Bear Handle

Turn the bear handle to make the seesaw move up and down.



# SING-ALONG SONG LYRICS

## Song 1

All aboard, let's take a ride.  
It's great with you by my side.  
When we're rolling down the tracks,  
Just sit back and relax.

## Song 2

The train can take us here or there.  
The train will take us anywhere!  
We'll go fast and we'll go slow.  
Let's go, hear the horn blow!

## Song 3

Here we go! C'mon, hippo.  
Tiger, hop in, watch the gears spin.  
See ya later, alligator.  
Hop inside, time to ride, off we go!

## Song 4

Come along and ride with me.  
From the park, to the zoo, to the sea!

## Song 5

We will have such a fun-filled day!  
I can't wait for us to play!

## CARE & MAINTENANCE

1. Keep the unit clean by wiping it with a slightly damp cloth.
2. Keep the metal parts on the **PURPLE SMART POLE** clean by wiping them.
3. Keep the unit out of direct sunlight and away from any direct heat source.
4. Remove the batteries when the train is not in use for an extended period of time.
5. Do not drop the unit on hard surfaces, and do not expose the unit to moisture or water.

## TROUBLESHOOTING

If for some reason the program/activity stops working or malfunctions, please follow these steps:

1. Turn the unit **OFF**.
2. Interrupt the power supply by removing the batteries.
3. Let the unit stand for a few minutes, then replace the batteries.
4. Turn the unit **ON**. The unit should now be ready to play again.
5. If the product still does not work, install a brand a new set of batteries.

If the problem persists, please call our Consumer Services Department on 01235 546810 (from UK) or +44 1235 546810 (outside UK) and a service representative will be happy to help you.

## TECHNICAL SUPPORT

If you have a problem that cannot be solved by using this manual, we encourage you to visit us online or contact our Consumer Services

Department with any problems and/or suggestions that you might have. A service representative will be happy to assist you.

Before requesting support, please be ready to provide or include the information below:

- The name of your product or model number (the model number is typically located on the back or bottom of your product).
- The actual problem you are experiencing.
- The actions you took right before the problem started.

**Internet:** [www.vtech.co.uk](http://www.vtech.co.uk)

**Phone:** 01235 546810 (from UK), or +44 1235 546810 (outside UK)

**IMPORTANT NOTE:**

Creating and developing **VTech®** products is accompanied by a responsibility that we take very seriously. We make every effort to ensure the accuracy of the information which forms the value of our products. However, errors sometimes can occur. It is important for you to know that we stand behind our products and encourage you to call our Consumer Services Department at 01235 546810 (from UK) and +44 1235 546810 (outside UK) with any problems and/or suggestions that you might have. A service representative will be happy to help you.

**CLASS 1  
LED PRODUCT**



# PRODUCT REGISTRATION

Visit [www.vtech.co.uk/clubvtech/login](http://www.vtech.co.uk/clubvtech/login)  
to register your VTech product

By joining the VTech Club you can also enter competitions, find out about news and events, seek expert advice for parents and let your kids play fun learning games and activities.



## PRODUCT WARRANTY

Thank you for choosing this quality product from VTech. We hope it will bring many hours of entertainment, imaginative play and learning.

1. The product detailed above is covered by a one year warranty from the date of purchase, against any defects in materials or workmanship.
2. The product may be returned to the place of purchase. Alternatively the product can be returned to VTech Electronics Europe plc (see address below), with proof of purchase, without proof of purchase no replacement will be provided.
3. VTech Electronics Europe plc will examine the product and if it is found to be defective due to faulty materials or workmanship, will replace the product at their discretion.
4. If the product covered by this warranty is damaged due to misuse, modification or unauthorised repair, or because of faulty batteries, battery discharge or incorrect electrical connections, then this warranty becomes void.
5. This warranty is personal to the original purchaser and is not transferable.
6. Breakages to the LCD screen are not covered by the warranty.
7. Returns to VTech Electronics Europe plc should include a cheque or postal order for £1.50 towards the cost of return postage and packaging.
8. Products returned to VTech Electronics Europe plc, should be addressed as follows and packed carefully to avoid damage in transit (Please do not include batteries or adaptor). Please include details of the fault together with your name and address.
9. To keep an online record of your warranty, please register your product online at [www.vtech.co.uk/warranty](http://www.vtech.co.uk/warranty)

Vtech Electronics EU PLC, c/o XPO Logistics, Warehouse 350, Cat & Fiddle Lane, West Hallam, DE7 6HE

**THIS WARRANTY IS OFFERED AS AN EXTRA BENEFIT AND DOES NOT AFFECT CONSUMERS' STATUTORY RIGHTS.**

This warranty is valid for the UK and Eire only. For products purchased outside the UK and Eire, please contact your local distributor or place of purchase.



**Visit our website for more  
information about our products,  
downloads, resources and more.**

***[www.vtech.co.uk](http://www.vtech.co.uk)***

